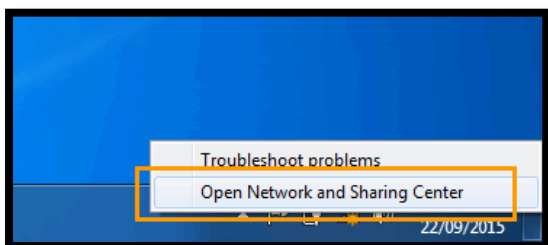


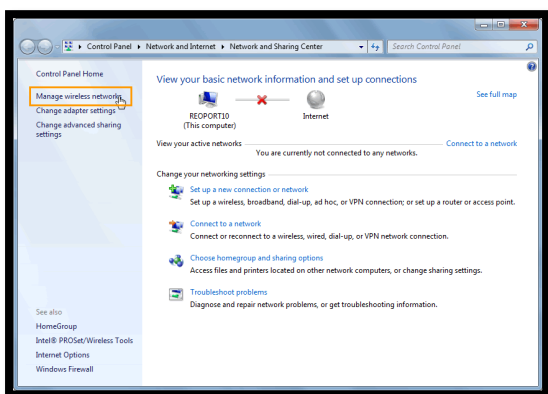
# Set up eduroam wifi for Windows 7

## Manual set up

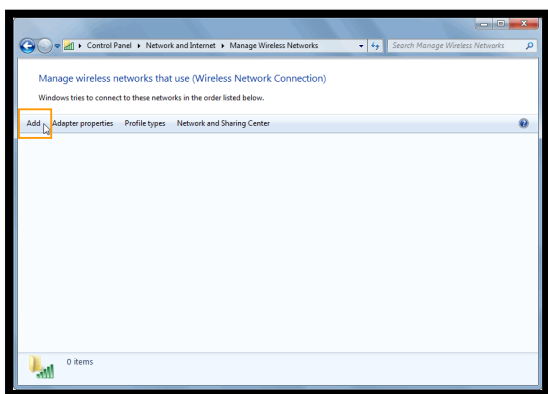
1. **Right-click** on the **wireless icon** in the bottom right of your screen and choose **Open Network and Sharing Center**.



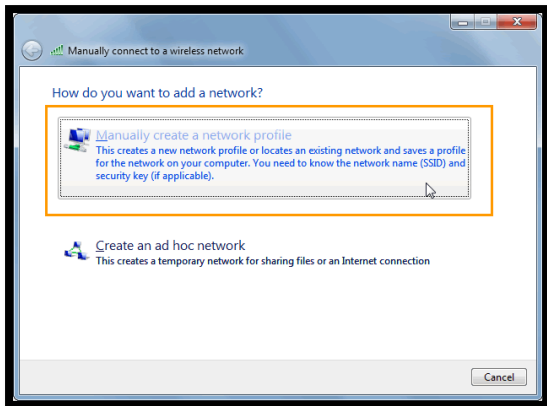
2. Click **Manage wireless networks**.



3. Click **Add**.

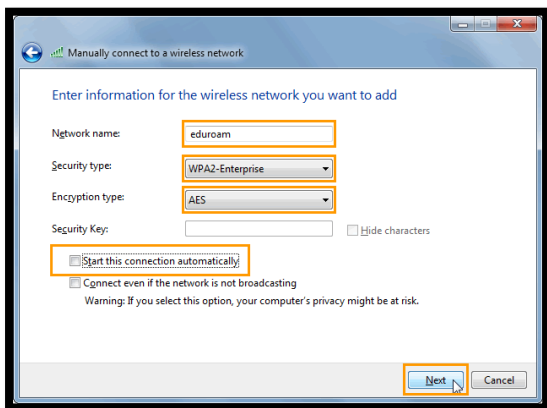


4. Click **Manually create a network profile**.



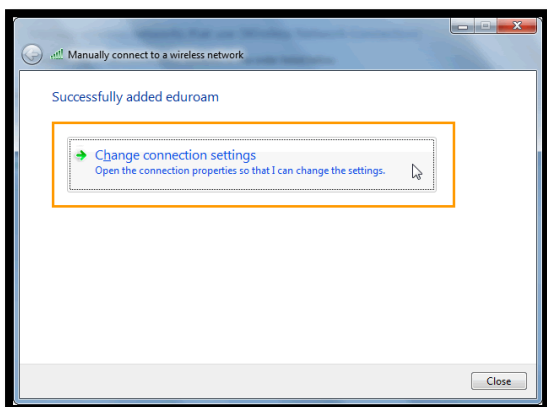
5. Choose the following settings:

- Network name **eduroam**
- Security type **WPA2-Enterprise**
- Encryption type **AES**
- Security Key **Leave blank**
- Start this connection automatically **Uncheck**



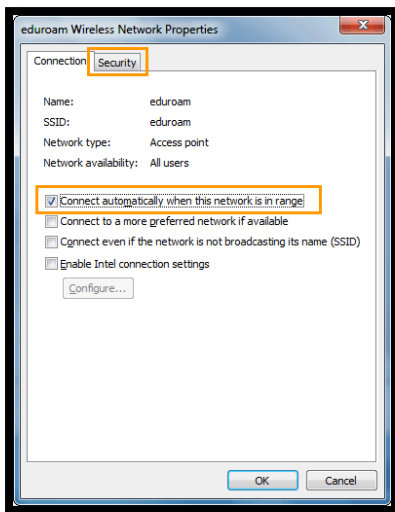
6. Click **Next**.

7. Click **Change connection settings**.

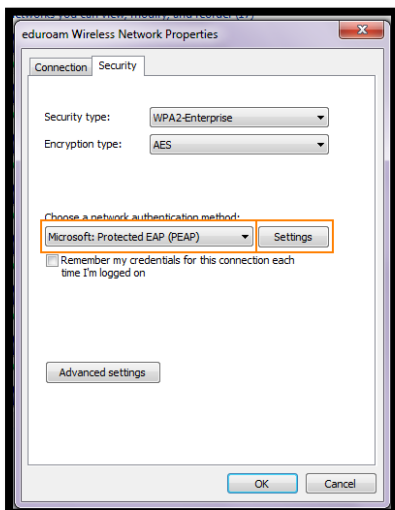


8. Check 'Connect automatically when this network is in range'.

9. Click the **Security** tab.

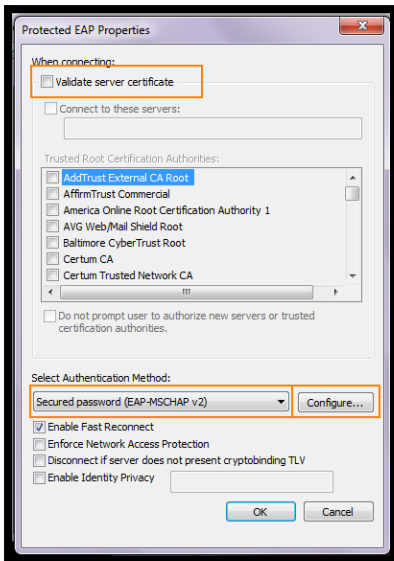


10. For 'Choose a network authentication method' choose **Microsoft: Protected EAP (PEAP)**. Then click **Settings**.

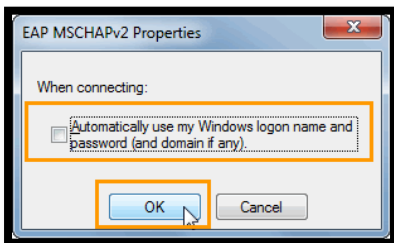


11. **Uncheck** 'Validate server certificate'.

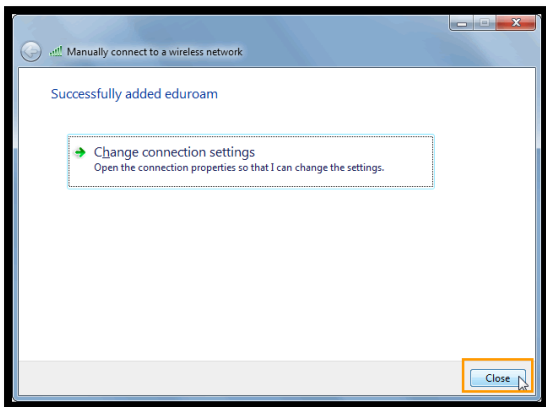
12. Set 'Select Authentication Method' to **Secured password (EAP-MSCHAP v2)**. Then click **Configure**.



13. **Uncheck** 'Automatically use my Windows logon name and password (and domain if any)'. Click **OK**.



14. Click **OK** again and then click **Close**.



*At this point your computer may automatically try and connect to eduroam. If it does, you'll prompted for your credentials. Enter your University email address and password, and then click OK. Otherwise proceed to the next step.*

15. From the desktop, click the **wireless icon** in the bottom right of your screen.



16. Find **eduroam** and click **Connect**.



17. When prompted enter your University email address and password. Click **OK**.



18. You should now be connected to eduroam wifi.