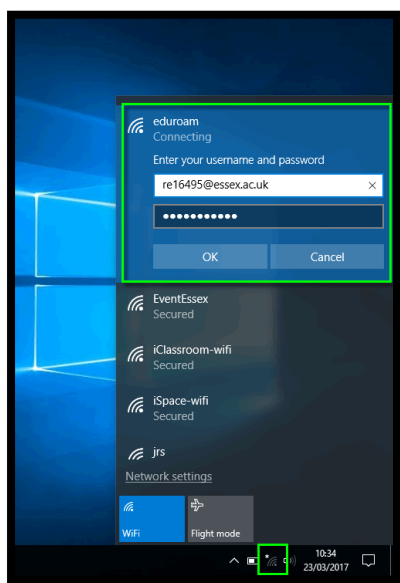


# Set up eduroam wifi for Windows 10

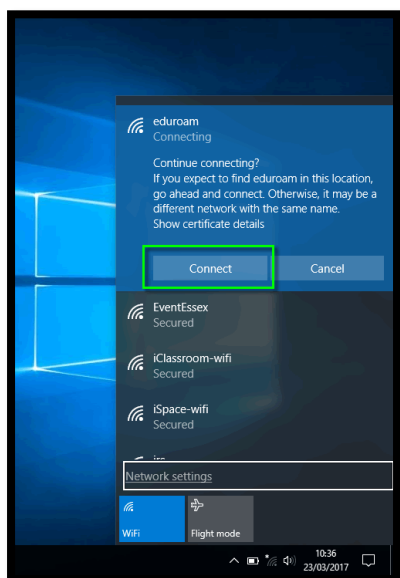
## To connect

---

1. From the desktop, click the **wifi icon** in the bottom right corner of the screen.
2. Select **eduroam** from the list of available wifi networks
3. Enter your University email address and password, then click **OK**.



4. **Check** the 'Connect automatically' box and then click **Connect**.
5. You may see a security certificate alert. If so, click **Connect** to continue.



6. You should now be connected to eduroam wifi.

### Can't connect?

Right-click **eduroam** and choose '**Forget this network**'. Now try and connect again.