



University of Essex

# University of Essex Knowledge Gateway

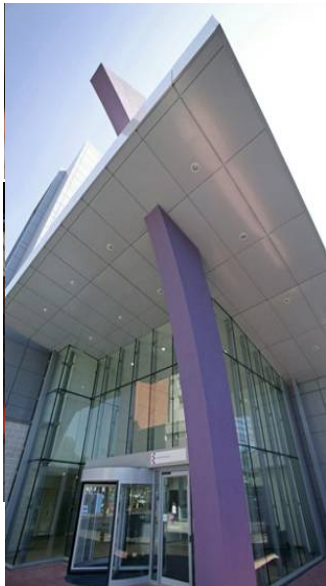
## **Presentation to Senate**

22 April 2009

Colin Riordan, Vice-Chancellor  
Tony Rich, Registrar & Secretary

# Essex in the Region

- University's role as a key regeneration partner in both Thames Gateway and Suffolk





# Knowledge Gateway

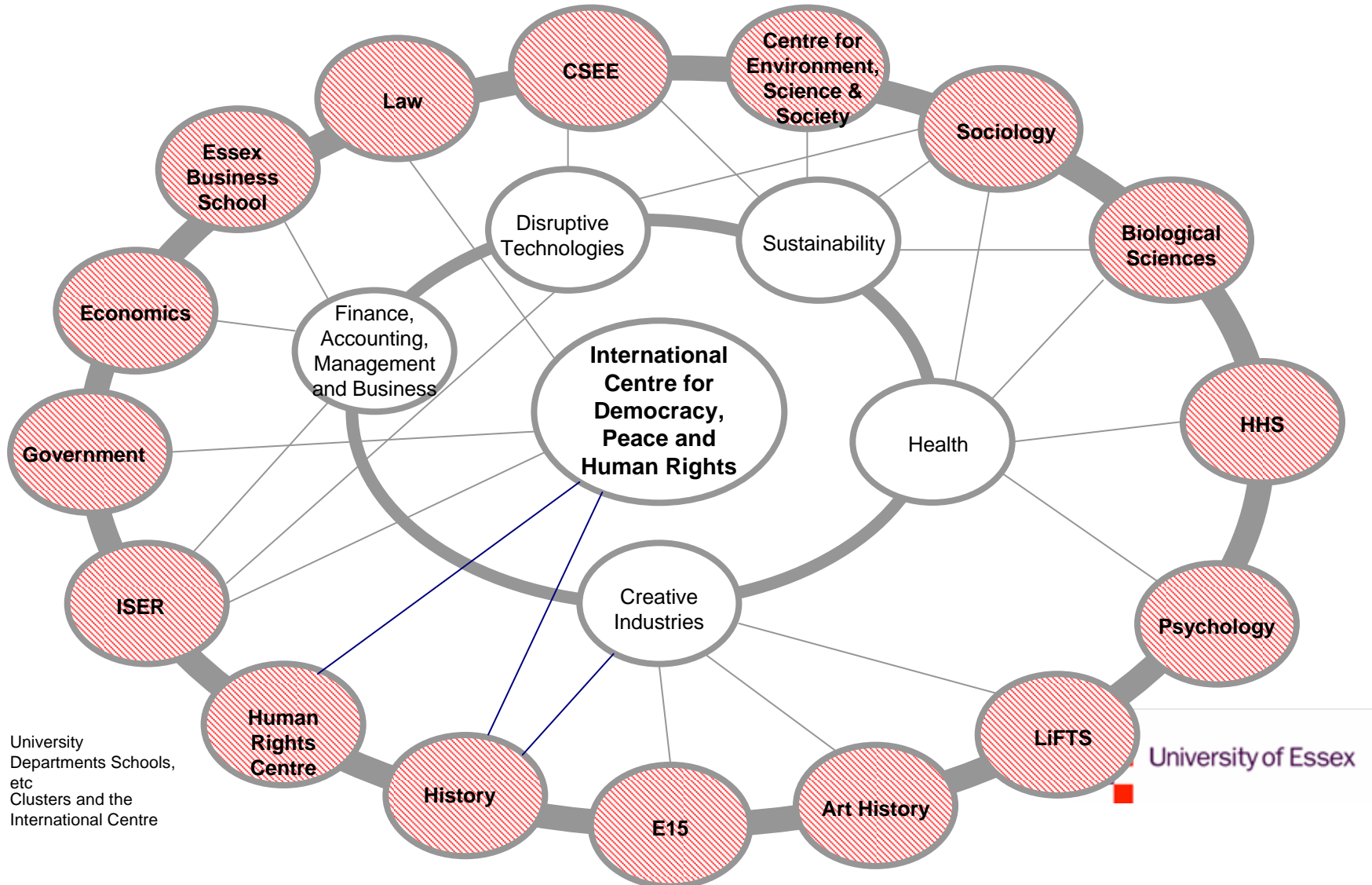
- New vision for the Research Park
- University of Essex Knowledge Gateway
- Central to our Knowledge Transfer Strategy
- International Centre for Democracy, Peace and Human Rights
- Delivery

# New Vision

To establish and develop a new concept for the “Research Park”, by creating a **Knowledge Gateway** – a knowledge transfer community that will channel University research and other expertise to the outside world:

- Capitalising on University strengths in Social Sciences and Human Rights
- Establishing Essex and region as unique resource for diverse demands of the world’s political and human rights arenas
- Attracting businesses and agencies from public, private and voluntary sectors
- Enhancing global recognition and attracting students and academics
- Creating a focus for other research areas

# Research clusters and connections



# Introducing the International Centre “Flagship Building”

- A world class, International Centre for Democracy, Peace and Human Rights
- Providing a single and unique focus for the Knowledge Gateway
- Supporting multiple research, training and knowledge transfer activities
- Attracting international political, NGO and business interests

# Centre Activities

- Rigorous research on causes and consequences of democracy, peace and human rights
- Bespoke analysis of countries, regions and the world
- Expert knowledge transfer
- Specialised training for governmental and non-governmental organisations
- Accreditation in the field of CSR and human rights
- Commercial space for like-minded organisations
- Electronic and hard copy publications

# The Plan

- Re-scope the overall planning for the Knowledge Gateway project, taking account of:
  - International Centre
  - Office Village
  - Student residences
  - Hotel/leisure facilities
  - Future advancement of the Knowledge Gateway within local and regional development strategies



# Aerial Photograph

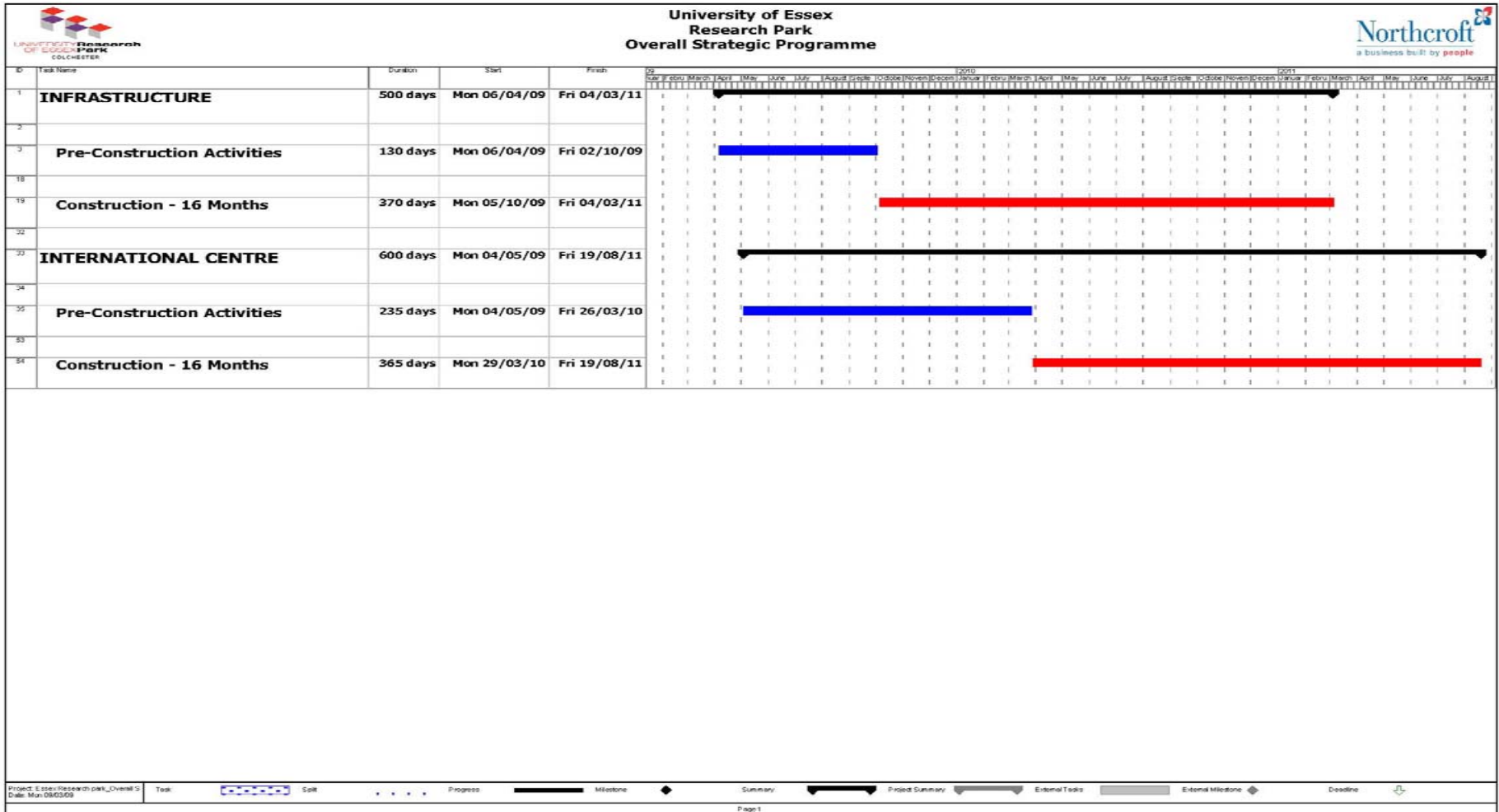




# International Centre Perspective



# Indicative programme



# Impact and Cost of International Centre

- International Centre - flagship building for Knowledge Gateway and part of £12.6m phase 1 (including infrastructure)
- In turn, this levers the whole wider development of the Knowledge Gateway, creating up to 2000 jobs and minimum 35,000m<sup>2</sup> research and business space
- Support for International Centre from local authorities, Haven Gateway Partnership, University and others

# Conclusions

- Global developments are creating the need for an International Centre for Democracy, Peace and Human Rights
- Aggregating the strengths of the University - well-placed to lead in this market, with a world-class brand
- Some business activities of International Centre can be developed as virtual enterprises, whilst Flagship Building is under construction
- International Centre can produce an operating surplus from its multiple income streams and diversity
- Strong partnership with Carisbrooke, and the will and drive to create a magnet for enterprise in all three sectors



Any Questions?